

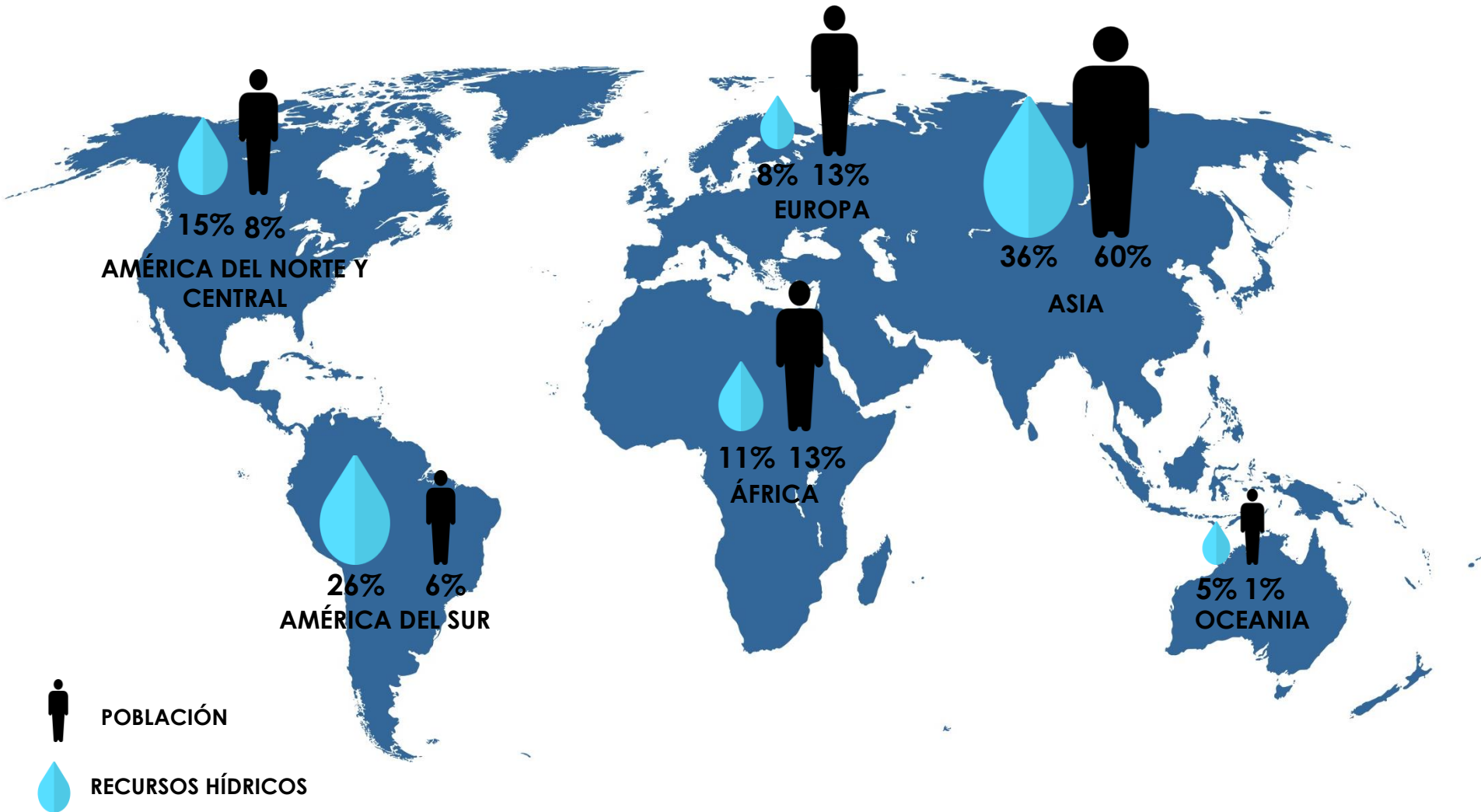


Secretaría del
Agua



**THE GROUNDWATER
RESOURCES OF ECUADOR,
WEALTH TO BE EXPLORED
2017**

WATER AVAILABILITY WORLD LEVEL

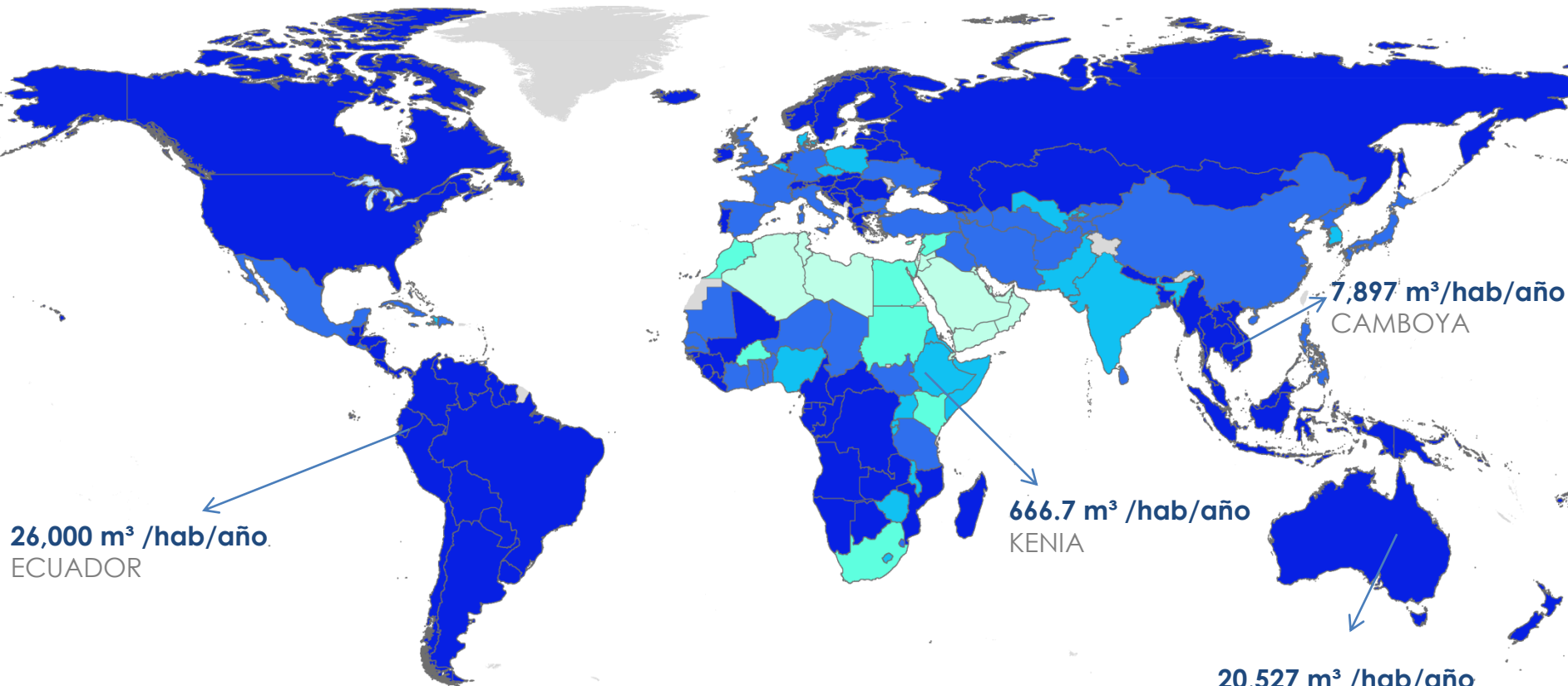




Secretaría del
Agua



WATER SUPPLY / PER CAPITA



26,000 m³ /hab/año.
ECUADOR

666.7 m³ /hab/año
KENIA

7,897 m³/hab/año
CAMBOYA

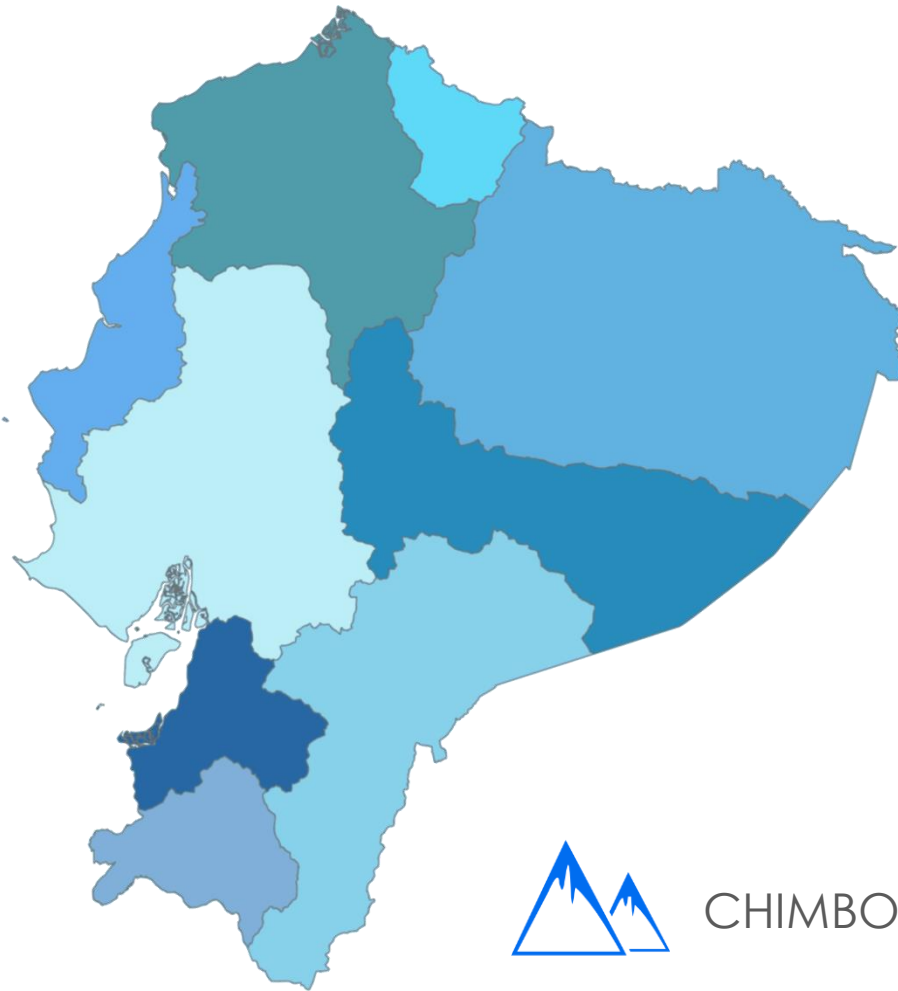
20,527 m³ /hab/año
AUSTRALIA

Leyenda (m³/año)

- No Data
- < 500 [escasez absoluta de agua]
- 500 - 1 000 [escasez crónica de agua]
- 1 000 - 1 700 [estrés hídrico]
- 1 700 - 5 000 [estrés hídrico ocasional]
- > 5 000 [recursos hídricos abundantes, posible estrés hídrico local]

Source: AQUASTAT

Fuente: FAO, AQUASTAT



270,670 Km²



16'570,000 (2017)



376,019 Hm³ (2014)



361,747 Hm³



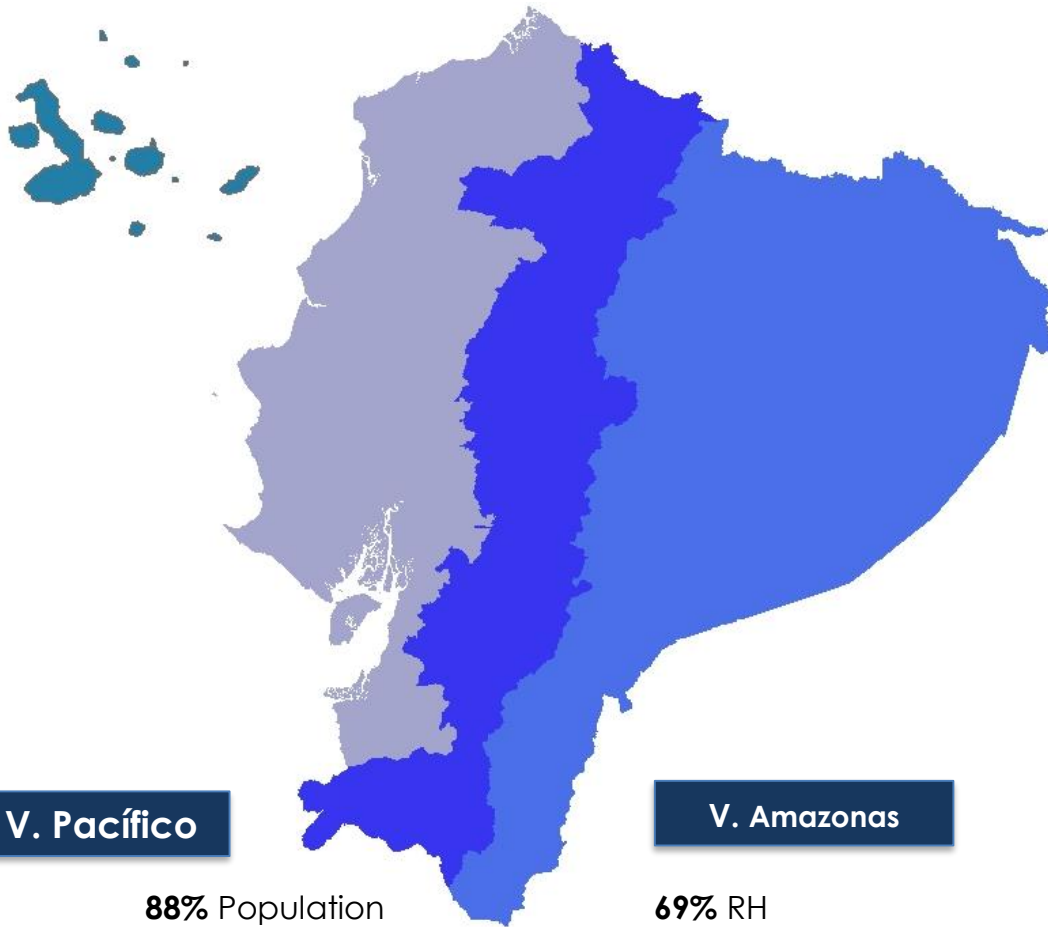
14,272 Hm³



CHIMBORAZO VOLCANO



GALÁPAGOS ISLANDS



V. Pacífico

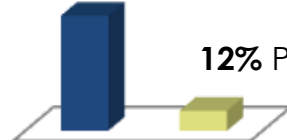
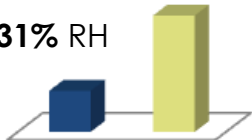
V. Amazonas

88% Population

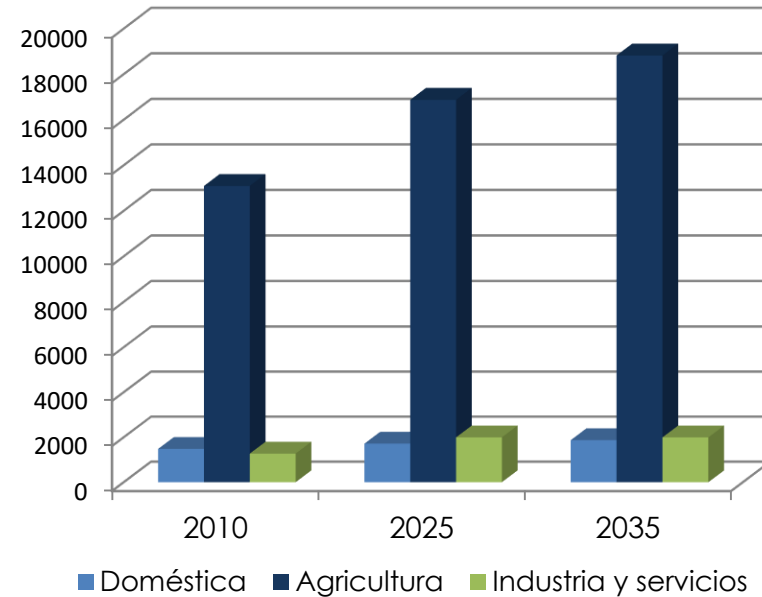
69% RH

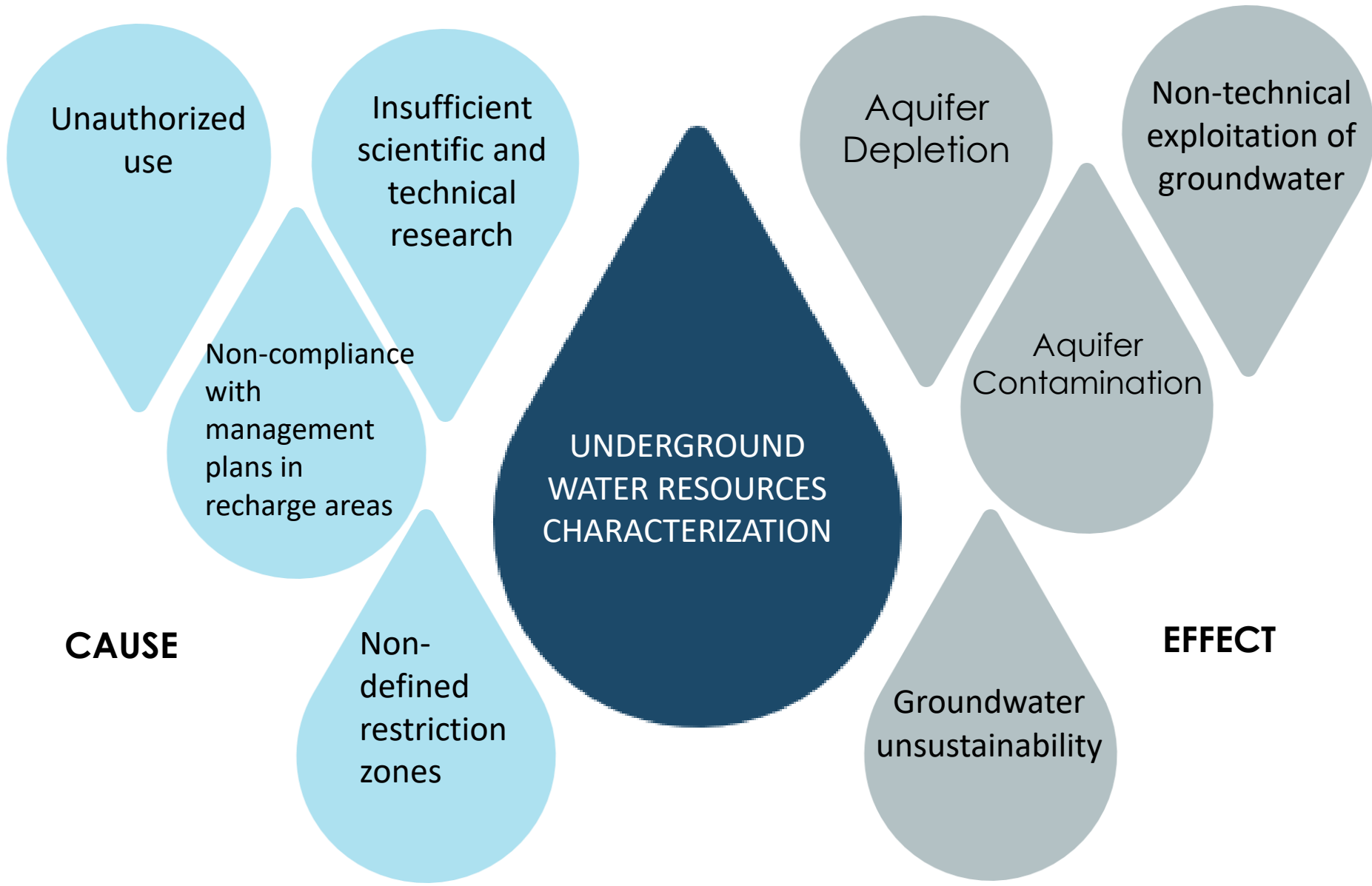
31% RH

12% Population



Water Demand(Hm³)





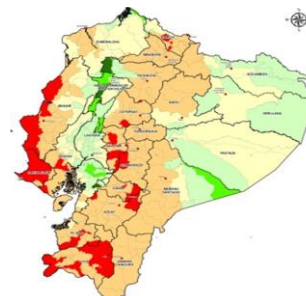
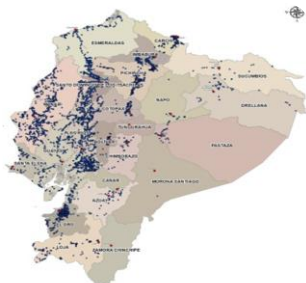
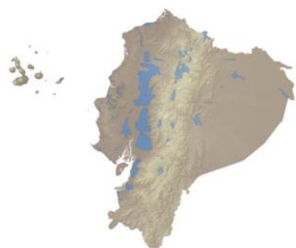
1989

2010

2014

2016

2017



Planificación
Nacional de
Recursos Hídricos
de la República
de Ecuador
(INERHI, CEDEX).

Levantamiento de
Información
Hidrogeológica de
Campo a Nivel
Nacional por
Sistemas
Hidrográficos
(SENAGUA – ICA).

Mapa
Hidrogeológico,
escala 1:250.000
(ESPOL)

Plan Nacional
de la Gestión
Integral de los
Recursos
Hídricos del
Ecuador
(CISPDR).

Manual de
Procedimientos
para el Estudio
Integral e
Inventario de
Agua
Subterránea
(Universidad de
Memphis).

76 AQUIFERS*



73 CONTINENTAL



3 ISLAND

UNDERGROUND WATER USES



78%



7%



9%



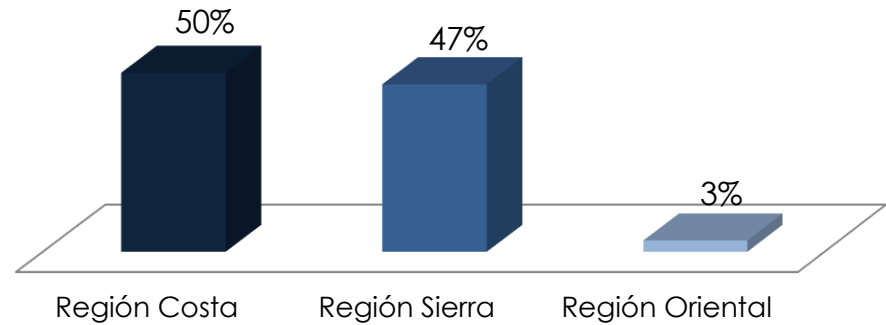
5%

BENEFICIARY POPULATION



37% Population

DISTRIBUTION OF WELLS

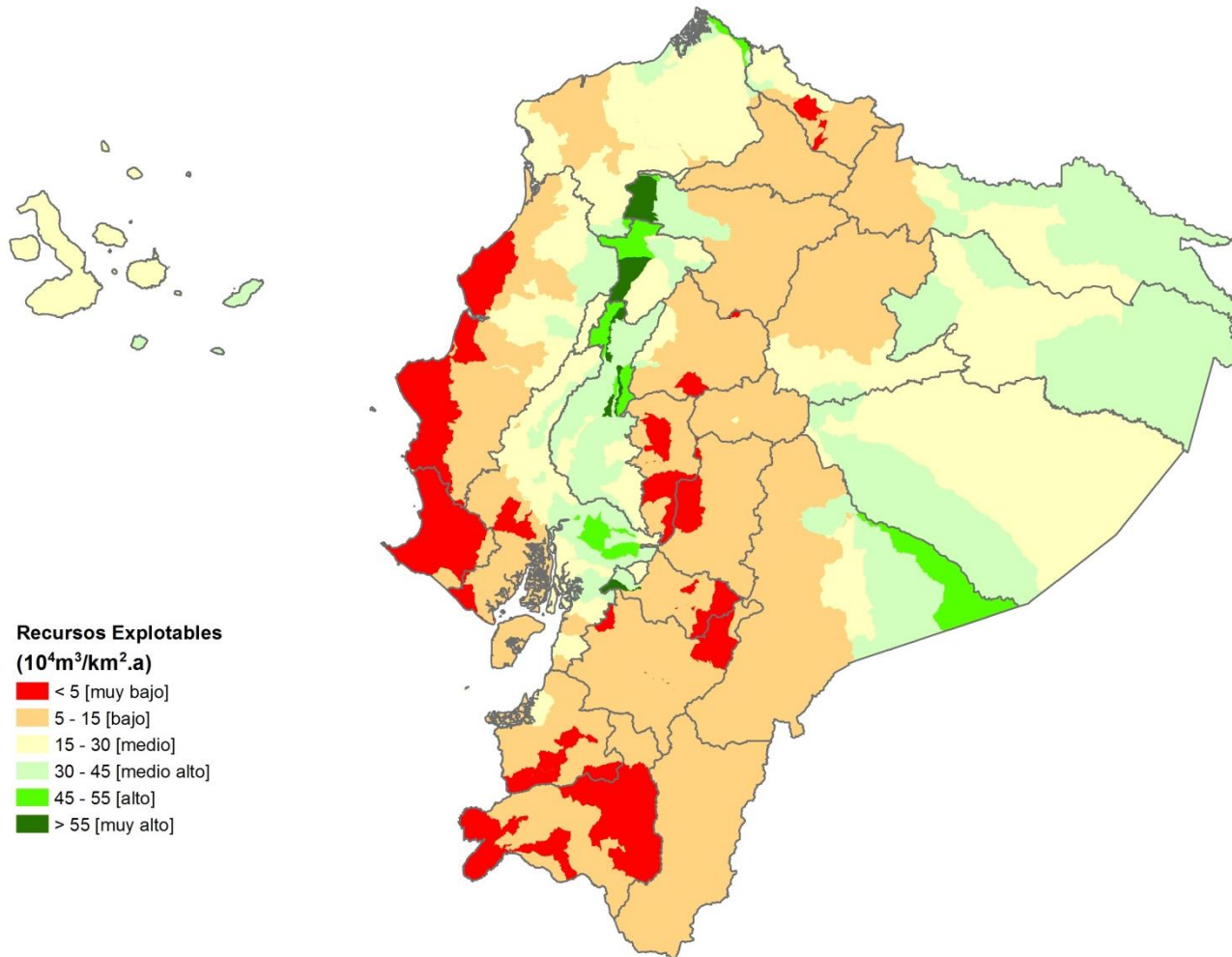


VULNERABILITY CONTAMINATION



22 Aquifers

DEMANDA DE DEFINICIÓN DE AQUIFERO EN FUNCIÓN DE LA POBLACIÓN



$$f(\text{acuífero}) = (DI; U; O; D; DF; E; V; FC)$$

Sistema Acuífero
Insular Galápagos



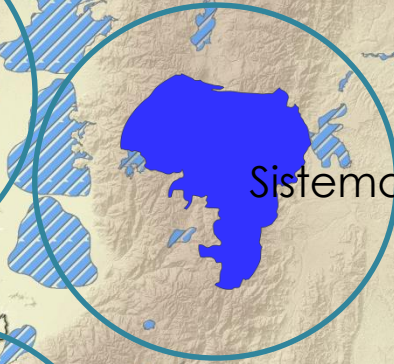
Sistema Acuífero
Transfronterizo Tulcán



Sistema Acuífero
Costero Puerto Cayo



Sistema Acuífero Riobamba



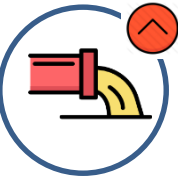
Sistema Acuífero
Costero Atahualpa



Sistema Acuífero
Transfronterizo Huaquillas



ACUÍFERO GALÁPAGOS



PLANNING

DEVELOPMENT



INTEGRATED MANAGEMENT OF
UNDERGROUND WATER
RESOURCES

ACTION

CONTROL